

Mobility Access for All:

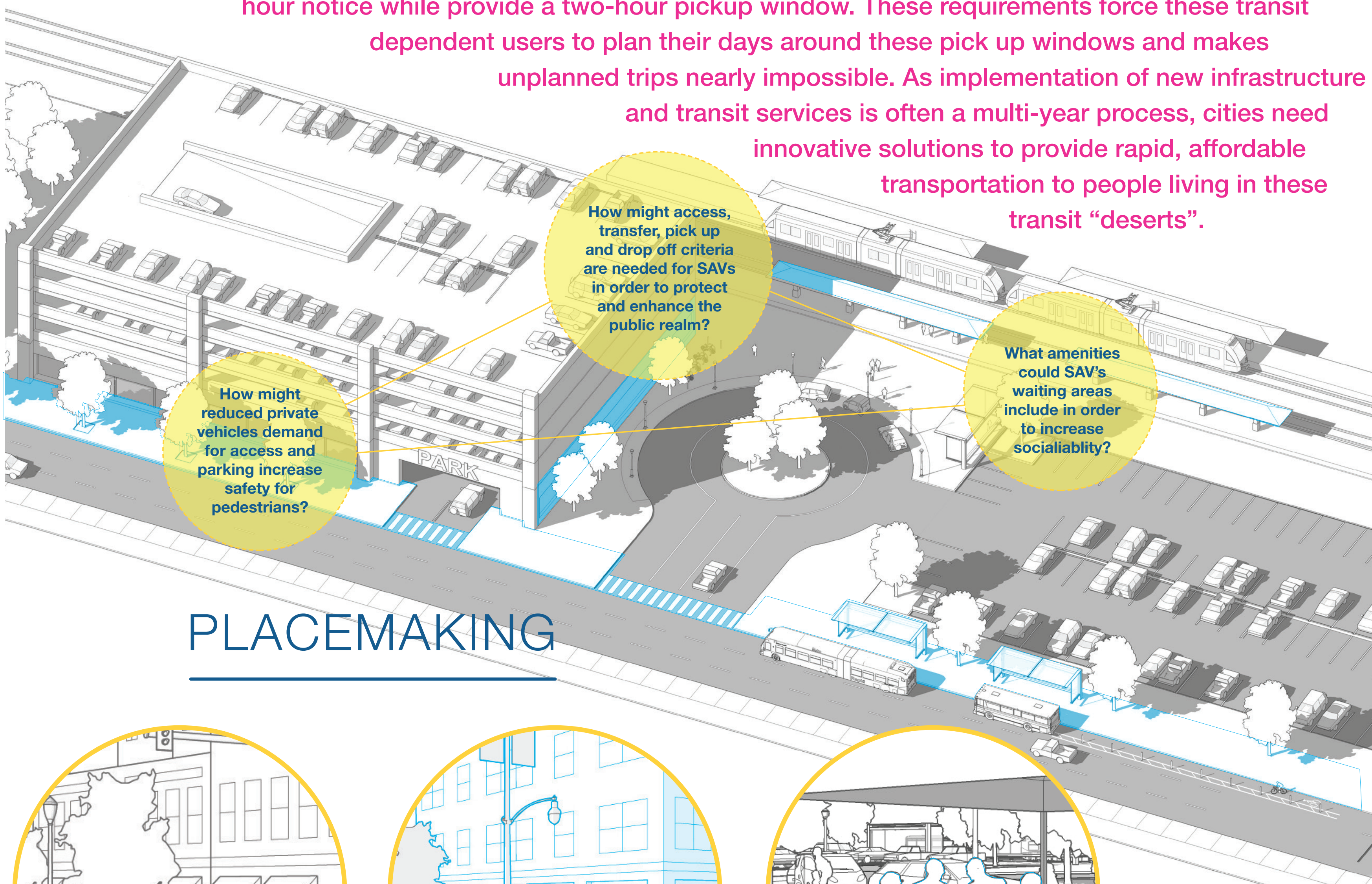


Defining the cities of tomorrow
ibigroup.com



PROBLEM STATEMENT

California is currently in the midst of one of the most severe housing crises in decades. In a recent article in the San Diego Union -Tribune, the average rent in San Diego was shown to have increased from \$1378 in 2010 to \$1875 in 2017, an increase of nearly 15% in just seven years. This trend has resulted in gentrification of many neighborhoods in the city center and the pushing of lower income San Diegans further into outlying neighborhoods where transit service is limited or non-existent. This trend has led to increased congestion, transit users competing for limited parking at transit centers with carpoolers and people using other travel modes, and increases the isolation of residents who cannot drive, have limited income for taxis and other ridesharing services, and/or lack access to transit. In particular, Paratransit service in San Diego is often the only form of transportation available for some disabled and elderly residents but, due to its cost, is greatly limited. Paratransit users are required to give 24 hour notice while provide a two-hour pickup window. These requirements force these transit dependent users to plan their days around these pick up windows and makes unplanned trips nearly impossible. As implementation of new infrastructure and transit services is often a multi-year process, cities need innovative solutions to provide rapid, affordable transportation to people living in these transit "deserts".



PLACEMAKING



Goal 1
Activate Street Frontages



Goal 2
Amenities at the Station



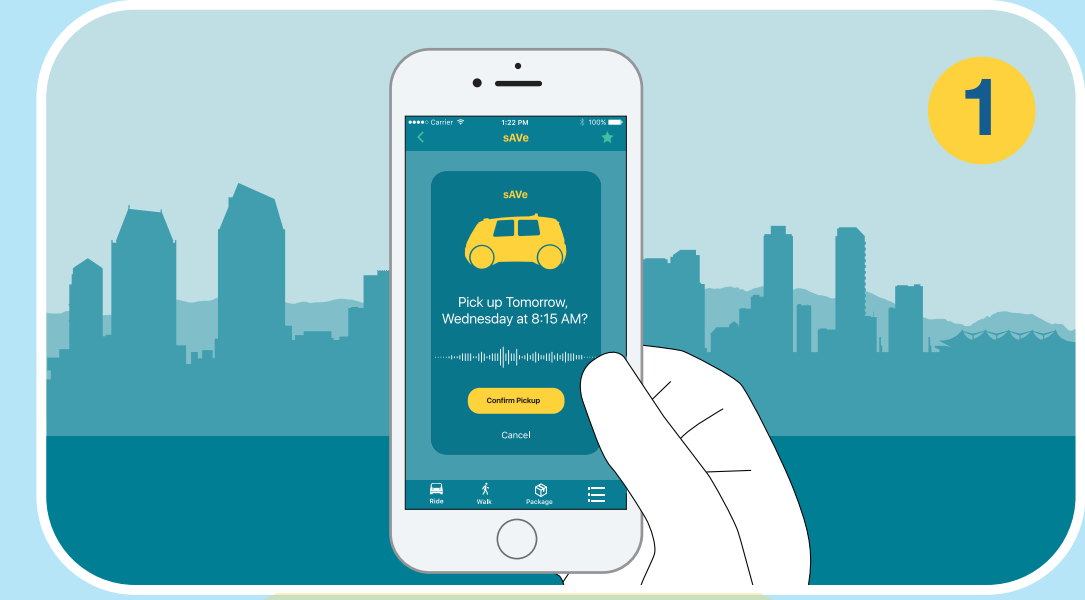
Goal 3
Increased Sociability

SOLUTION STATEMENT

sAve, delivers a community-supported, accessible, Mobility as a Service platform offering multi-modal ridesharing services, delivering immediate benefits to underserved neighborhoods, while also being capable of incorporating autonomous vehicles as they become available. **sAve** provides local trip services in underserved neighborhoods and connects those residents to public transit hubs that are otherwise not easily accessible. To meet all users' needs, **sAve** rides can be reserved via smartphone app, community kiosk, or by speaking with a customer service representative.

The potential benefits of **sAve** are extensive. As an agency-sponsored service, **sAve** enables oversight of private transportation companies permitted to operate within the service area, leverages existing public infrastructure without additional private vehicles in already congested areas, provides a social opportunity with rewards incentives to residents who choose to share rides, and enables improved placemaking opportunities around transit centers like offering third party amenities and enhanced street frontages that attract people to shop around the station. Finally, this application allows the gradual introduction of autonomous vehicles to populations who can most benefit from improved mobility options.

This is the story... of strangers... picked to live in the city... and have their mobility issues illustrated... to find out what happens... when **sAve** provides mobility access for all.



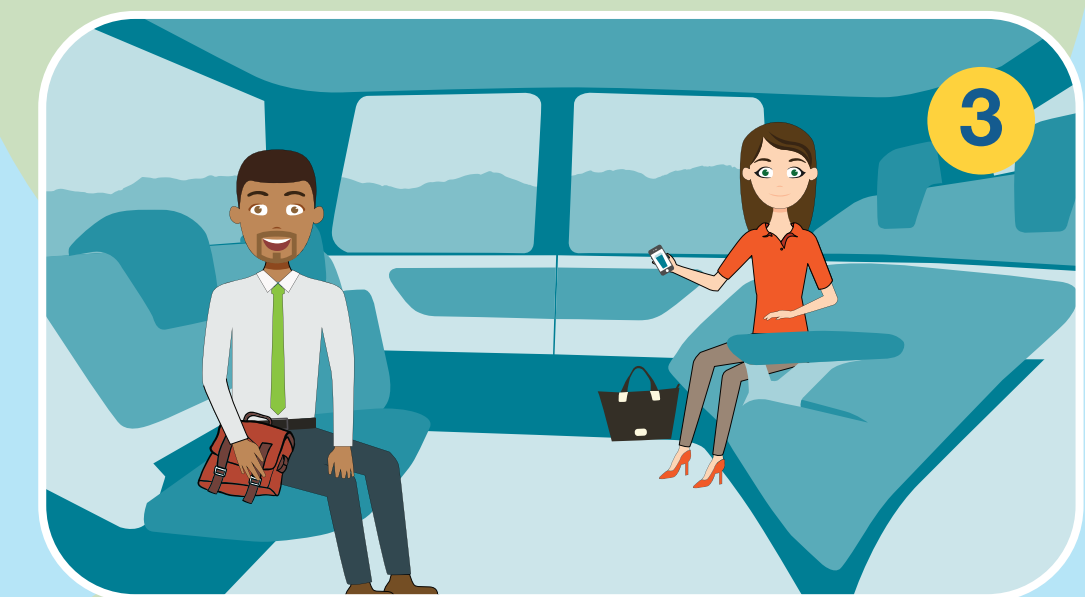
1

I can order my ride to work instantly or even schedule a pickup the night before.

The **sAve** shuttle picks me up right at my door. I don't mind sharing my ride to the station because it saves me time I would otherwise spend trying to park at an overcrowded park and ride, money I can use on other things, and stress worrying about whether I'll make my bus.



2



3

Coffee is a necessity in the morning, so I love that I can order my drink on my ride to the transit station.

I can pick up my coffee when I get to the station and board the express bus right away because my trip is timed accordingly through my **sAve** app.



4



5

On my ride downtown, I usually enjoy my coffee, listen to music and check emails on my phone.

I am dropped off downtown and usually walk the 4 blocks to my office, but I could take another **sAve** shuttle or use the bike share if I wanted to.



6



7

Nowadays, I'm usually at work before 9 am. And I've already gotten emails out of the way! My commute is much less stressful with the certainty that I can get to work on time without hassle and worry-free while saving time and money.

Potential Areas of Consideration:

- Rapid Transit Stations in North County
- East County Trolley Stations
- Coaster Stations

